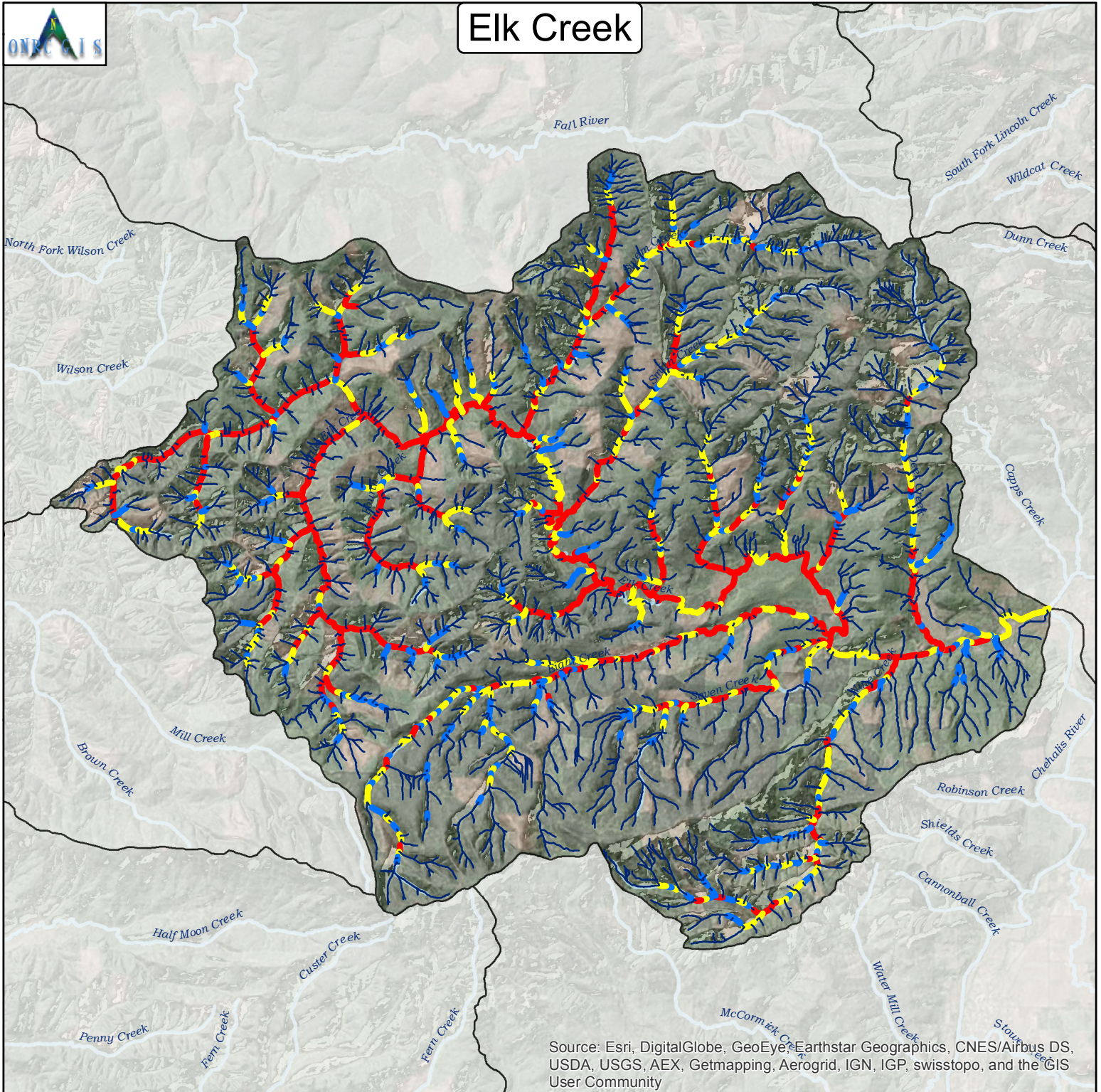


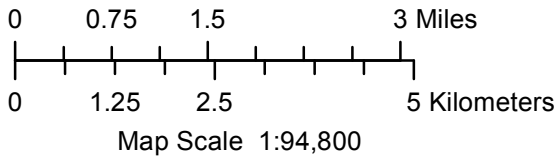


# Elk Creek



Source: Esri, DigitalGlobe, GeoEye, Earthstar Geographics, CNES/Airbus DS, USDA, USGS, AEX, Getmapping, Aerogrid, IGN, IGP, swisstopo, and the GIS User Community

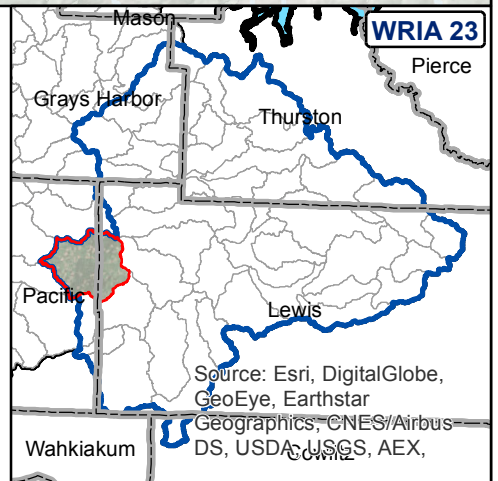
Maps By Keven Bennett  
UW | ONRC GIS  
11/18/2015



**Intrinsic Potential Scoring for Coho Habitat**

—	0	
—	> 0 to 0.35	Low
—	> 0.35 to 0.75	Medium
—	> 0.75 to 1.00	High

**Burnett, 2007**



Source: Esri, DigitalGlobe, GeoEye, Earthstar Geographics, CNES/Airbus DS, USDA, USGS, AEX,

Projection: UTM NAD83 10N Meters  
For Detailed Documentation Go To:  
[http://www.onrc.washington.edu/MarinePrograms/IPOuterCoast/PostPhaseII\\_MapPortal.html](http://www.onrc.washington.edu/MarinePrograms/IPOuterCoast/PostPhaseII_MapPortal.html)